

# TRAFFIC PRO BEDS<sup>®</sup>

**SAFETY EFFICIENCY VERSATILITY**



**SALES@TRAFFICPROBEDS.COM**  
**(240) 405-2052**

# OUR STORY

35,000 plus injuries. Over 700 deaths per year. These numbers from the NHTSA are hard to ignore. **Out of tragedy Traffic Pro Beds (TPB) was founded with a simple mission**, make deploying and maintaining temporary traffic control safer and faster. After searching and scouring for a solution, they couldn't find it, so **they made it.**

From **30 years of professional traffic control experience**, and 10 years of product development, the Traffic Pro Bed System is changing how private and government entities across the nation approach traffic control.

Designed for mid-sized to heavy duty trucks, **Traffic Pro Bed's patented system makes traffic control an all around safer experience**, with residual benefits to operational efficiency, truck bed organization and versatility, equipment longevity, storage capacity, and potential monetary savings. For these reasons the Traffic Pro Bed was recognized by industry leaders at **ATSSA's Annual Innovation Award competition** in 2019 and quickly adopted across the nation.

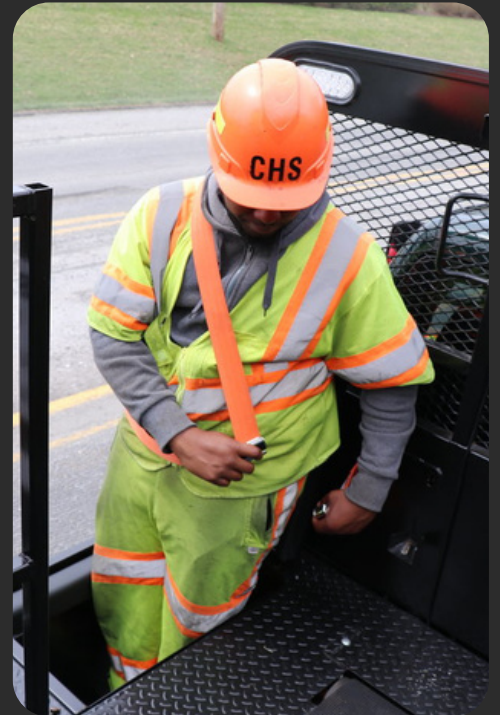
## PATENTED SAFETY

**As a part of our Personnel Bucket**, our patented safety restraint system is designed to keep your workers safer during cone deployment and bring your fleet into OSHA compliance. Read more below.

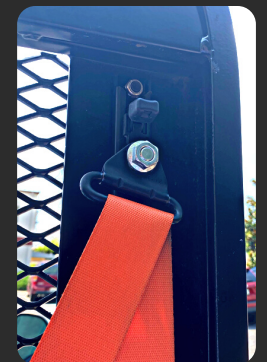
**Bring YOUR crews into OSHA compliance.** OSHA regulation under section 5(a)(1) dictates employers should provide all truck occupants a proper restraint system, even in a truck bed. Keeping occupants in compliance with manufacturer warnings relative to the obvious prevalent danger associated with being unrestrained in the back of a moving vehicle. Additionally, according to the Insurance Institute for Highway Safety, 32 states and the District of Columbia require all passengers to wear a seatbelt/safety restraint system while in a moving vehicle.

Keep workers safe and secure in the back of the truck to prevent workers from falling or being launched from the truck during a collision.

Adjust the shoulder height of Safety Restraint System to accommodate workers.



**TRAFFIC  
PRO BEDS®**



# THE PERSONNEL BUCKET

The enclosed box design allows workers to maintain a **strong and firm leg position inside the personnel bucket** during deployment and pick up, preventing falls and injuries.



Box positioning keeps workers more shielded by the bed from collision and effectively **increasing effective visual and verbal communication** between workers and the driver.



Utilize the leg and back padding to help **prevent worker fatigue and injuries** resulting from going over road deformities and any quick start and stop motions of the vehicle.

Raise or lower personnel bucket height to make device pick up and deployment easier, accommodate varying worker heights, and avoid curb strike.

Use personnel bucket corner steps and sign/stand box handles to easily and **safely step in and out of the truck bed.**



# SIGN & STAND BOXES

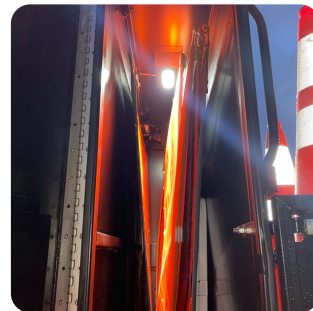
**Always have safe access to devices** in and around the truck bed.

No longer risk your life or waste time climbing into the back of your truck bed to pull equipment.

Keep devices organized in order of deployment and secure in their designated place in the truck bed to **have easy access, prevent equipment damage, and mitigate equipment associated injuries.**

Store up to 20 small stands and at least 30 roll up signs per bed.

Each sign box comes with inside work lighting to **help workers see signs during nighttime set-up.** In total, the Traffic Pro Bed comes standard with 6 work lights and 13 amber strobe lights.



## UNDER BED BOX

Always have paddles secured, accessible, and out of the way.

Mitigate the majority of damage dealt to your stop and slow paddles.



## TOOL BOXES

Secure miscellaneous tools under lock and key.

Customize with add on features such as a water cooler insert.



# CONE DRIVE SYSTEM

## THE SAFER AND EASIER, AND MORE EFFICIENT WAY TO ACCESS CONES

This **labor reducing technology** eliminates the need for a crew member in the back of the truck, increasing worker safety, and work force efficiency.

**Maintain access to all cones** in the truck bed while safely secured in your personnel bucket.

With the push of a button, **instantly have cones brought up** from the back of the truck bed while safely secured in your personnel bucket.

The cone drive for the 200 series comes with two cone rows, while the cone drive for the 300, 400, 500 series comes with three cone rows.

Series	Added Weight to Bed	Dimensions
200	209 lb.	104 x 32 ft
300	265 lb.	104 x 45 ft
400	275 lb.	114 x 45 ft
500	292 lb.	136 x 45 ft



# STAKE BODY FENCE

Our new TPB stake body fence system now features several key modifications to **improve worker safety, decrease injury**, and improve the overall use and application of larger devices, such as barrels and grabber cones. This system provides **all of the safety features recognized in the Traffic Pro Bed** while being overall more optimal for loading, deploying, and retrieving such devices on the road.

Unlike other stake body fence systems, this **system can swing down to the side of the bed** for easy forklift loading access. Swinging the stake fence downward also creates a greater opening to deploy and retrieve devices from, whether the devices are stacked, thrown, or handed off to another crew member in the truck bed.

Also, unlike other stake fence systems, this **rigid design is able to be removed in segments**, making the fencing easier for an individual to handle and remove and use with limited staff while being less likely to incur worker injury. The stake fencing can also be removed to make space for mounting more substantial configurations (such as a spray rig) for specialized work.

The stake fence system is available in each truck deck series and can be acquired as a full stake body truck bed or as a half stake body with a Sign and Stand box (as pictured). The stake fence system is also **interchangeable with other TPB configurations**.



# ADDITIONAL FEATURES



## **NIMBLE**

Highly maneuverable through work zones.



## **LONGEVITY**

Made to last from truck to truck.



## **WEATHER RESISTANT**

Industrial grade paint.



## **SHEILDING**

Use truck bed to shield from traffic during deployment.



## **REFLECTIVITY**

Diamond grade chevrons & body marking reflective tape.



## **WARNINGS**

Extensive warning signs, safety labels, & reminders.



## **VERSATILITY**

Set the Traffic Pro Bed to different configurations from job to job.

# PRODUCT ADD-ONS

## VMS & ARROW BOARDS

Have VMS or Arrow board installed right on top of your sign boxes, where it's out of the way, and visibility is maximized. Get your VMS or Arrow board through us.

We work with many brands including Wanco, Vermac, Solar Technology, etc.

Have us install one of your current VMS or Arrow boards.

## LIGHT KITS

**Ground Lighting** - Illuminate the ground surrounding the truck to prevent falls and injuries. 4 total white oval work lights, 2 lights on the tailgate, and 1 next to each personnel bucket, will ensure 360 degree ground visibility.

**Scene Light Kit** - Illuminate the surrounding area of the truck for better worker and public visibility. 4 total scene lights, 2 on the outside of each Sign & Stand Box, will ensure your crew is seen.

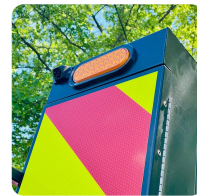
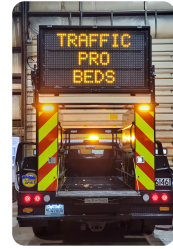
**Go Lighting** - Better emphasize an active flagging operation. This kit comes with 1 Remote Control 360 Degree Go light, with strobing capabilities.

## CAMERAS SYSTEMS

**The four-channel camera system** includes a 7" monitor, and 1 TB wifi/3G/4G capable DVR system. Cameras face left, right, and back of the truck, and the personnel buckets. Upgrade to **the five-channel system** for a cab interior facing or front-facing camera.

## ICONE

Add iCone technology to make drivers more aware of your work zones before they even get on the road. Simply install to a trucks warning lights or arrow/VMS board, and with the flip of a switch, your work zone location is automatically transmitted to some of the most popular public navigational applications available, including Waze.





# COMPONENTS

## RETROFIT OUR TPB COMPONENTS TO BUILD YOUR TRAFFIC CONTROL TRUCK

Make **OUR** Traffic Pro Bed (TPB) components a part of **YOUR** Traffic control vision.

Easily retrofit our **modular TPB components** to build your own Traffic Pro Bed from what you already have.

Our Personnel Bucket and patented Safety Restraint System comes complete with mounting brackets.

Sign & Stand Boxes come complete with safety/work lighting, and diamond grade red and yellow chevrons.

Turn any flat bed into a Traffic Pro Bed.



Other Components	Dimensions	Weight (Per Unit)
Sign/Stand Box	71" L x 26" W x 56" H	299 lbs.
Personnel Bucket 200	27" L x 17" W x 29" H	107 lbs.
Personnel Bucket 300 - 500	27" L x 21" W x 33" H	129 lbs.
200 & 300 Tool Box	31" L x 14" W x 18" H	56 lbs.
400 & 500 series Tool Box	24" L x 14" W x 18" H	47 lbs.

# STANDARD & DELUXE TPB MODEL

## Standard Model.

Ideal for utilities and small to midsize traffic operations.

The Standard model is an ideal dedicated traffic control truck bed for any operation. Maximize sign and stand storage and organization. Keep your workers safer on the road. And get the job done faster and more efficiently. Ideal for utilities, and traffic control operations.

### This model comes with the following components:

- 2 Sign and Stand Boxes
- 2 Personnel Buckets with Safety Restraint System
- 1 Headboard
- 1 Tailgate
- 1 Under Bed Paddle Box
- 4 Work Lights
- 2 Sign Box Lights
- 13 Amber Strobe 360 LED Warning Lights
- Red/Yellow Diamond Grade Retro-Reflective Tape
- Red/White Body Marking tape

## Deluxe Model

Ideal for municipalities and mid to large scale traffic operations.

Get the bells and whistles by upgrading from the Standard to the Deluxe Traffic Pro Bed to maximize deployment efficiency, visibility, miscellaneous tool storage, and ultimately safety.

### This model comes with the following components:

- **Cone Drive System**
- **Under Bed Light Kit**
- **Scene Light Kit**
- **2 Custom Toolboxes**
- 2 Sign and Stand Boxes
- 2 Personnel Buckets
- 2 Safety Restraint Systems
- 1 Headboard
- 1 Tailgate
- 1 Under-Bed Paddle Box
- 4 Work Lights
- 2 Sign Box Lights
- 13 Amber Strobe 360 LED Warning Lights
- Red/Yellow Diamond Grade Retro-Reflective Tape
- Red/White Body Marking



# STAKE BODY TPB MODELS

## Half Stake Body Model

Ideal for part-time traffic controllers and landscaping operations.

The Half Stake Body Model is a worthwhile compromise between a Traffic Pro Bed and a stake body. Have all the space you need for cones, barrels, and grabbers, while maintaining the safety and organizational efficiency of our sign and stand box. With swing down stake fencing, easily load and unload devices and equipment of all shapes and sizes.

### This model comes with the following components:

- 1 Sign and Stand Boxes
- Half Stake Body Fencing
- 1 Stake Body Tailgate
- 2 Personnel Buckets with Safety Restraint System
- 1 Headboard
- 1 Under-Bed Paddle Box
- 4 Work Lights
- 2 Sign Box Lights
- Red/White Body Marking
- 13 Amber Strobe 360 LED Warning Lights
- Red/Yellow Diamond Grade Retro-Reflective Tape

## Full Stake Body Model

Ideal for large companies and large highway traffic operations.

The Full Stake Body Model is ideal for your highway jobs requiring many big devices and temporary equipment rigs (such as a spray rigs). Safely and easily store, access, and deploy all of your devices from your Personnel Bucket with our swing down fence system.

### This model comes with the following components:

- Full Stake Body Fencing
- 1 Stake Body Tailgate
- 2 Personnel Buckets with Safety Restraint System
- 1 Headboard
- 1 Under Bed Paddle Box
- 4 Work Lights
- 2 Sign Box Lights
- 13 Amber Strobe 360 LED Warning Lights
- Red/Yellow Diamond Grade Retro-Reflective Tape
- Red/White Body Marking



# TPB SPECIFICATIONS

## 200 Series

**Cone Capacity:** 125+

**Dimensions:** 120" L x 88" W

**Required Truck Specs:**  $\frac{3}{4}$  to 1 ton SRW truck with a 60" CA

200 Series Weight by Model			
Standard	Deluxe	Half Stake Body	Full Stake Body
1,649 lb.	1,970 lb.	1,584 lb.	1,399 lb.

## 300 Series

**Cone Capacity:** 400+

**Dimensions:** 120" L x 98" W

**Required Truck Specs:** Dually truck with a 60" CA

300 Series Weight by Model			
Standard	Deluxe	Half Stake Body	Full Stake Body
1,734 lb.	2,111 lb.	1,667 lb.	1,482 lb.

## 400 Series

**Cone Capacity:** 500+

**Dimensions:** 136" L x 98" W

**Required Truck Specs:** Dually truck with a 84" CA

400 Series Weight by Model			
Standard	Deluxe	Half Stake Body	Full Stake Body
1,776 lb.	2,145 lb.	1,802 lb.	1,623 lb.

## 500 Series

**Cone Capacity:** 600+

**Dimensions:** 152" L x 98" W

**Required Truck Specs:** Dually truck with a 108" CA

500 Series Weight by Model			
Standard	Deluxe	Half Stake Body	Full Stake Body
1,865 lb.	2,251 lb.	1,919 lb.	1,741 lb.





# TAKE ACTION NOW

Give you and your crews the technology and tools to complete jobs safely and efficiently. Contact us today to see how Traffic Pro Beds can make you a part of the solution, not the statistic.

## CONTACT

SALES@TRAFFICPROBEDS.COM

(240) 405-2052